



COLOURS and SHAPES

PRIMARY COLOURS

THERE ARE THREE PRIMARY COLOURS

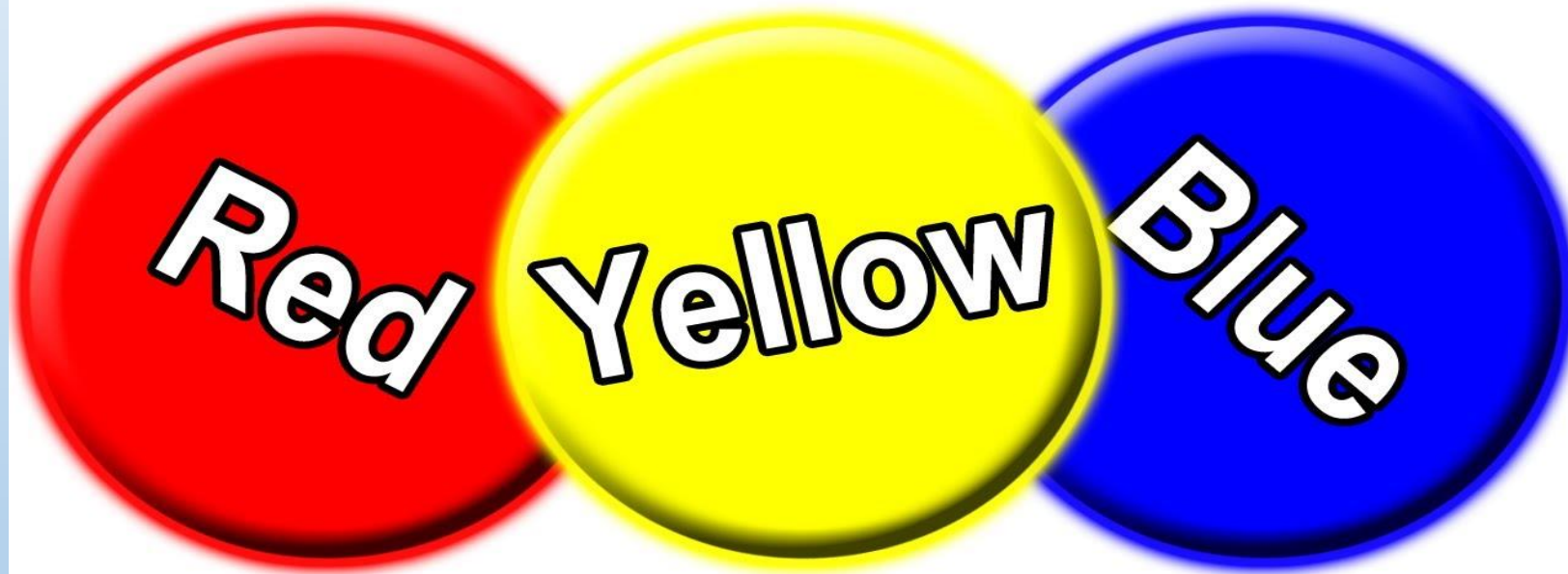


PLATE VII



MANUFACTURE OF LAKE PIGMENTS

To face page 114

SHADES OF RED

RED

STRAWBERRIES

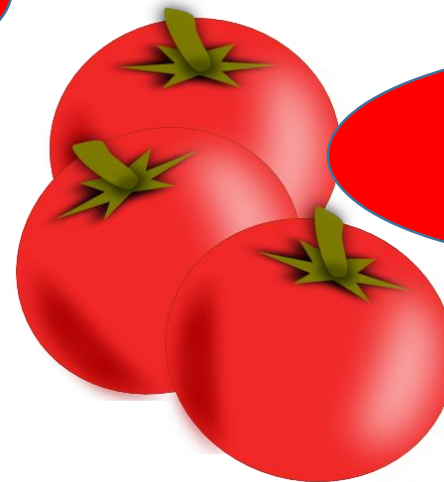


RED LIKE

FLOWERS



TOMATOES



Blues

BLUE

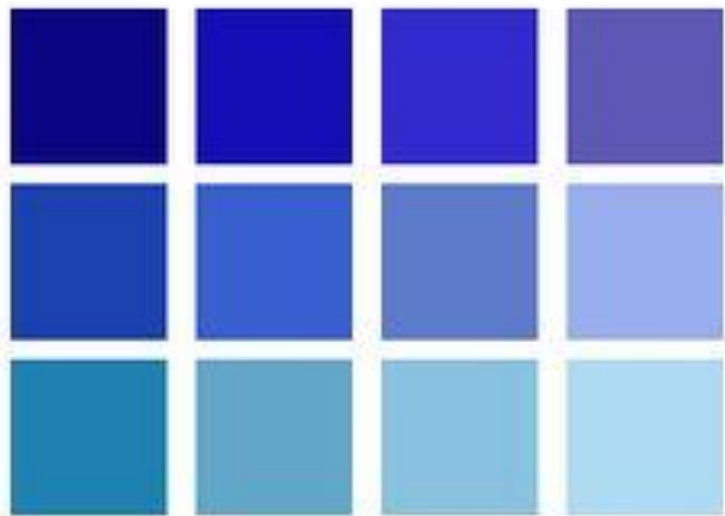
SKY



BLUE LIKE

SEA

BUTTERFLY



SHADES OF BLUE





Yellow Jubilee Y2-A1-1



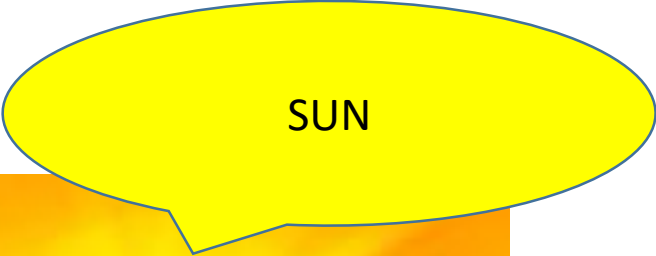
Lemon Essence Y5-A1-2



Panorama Lights Y4-A1-3

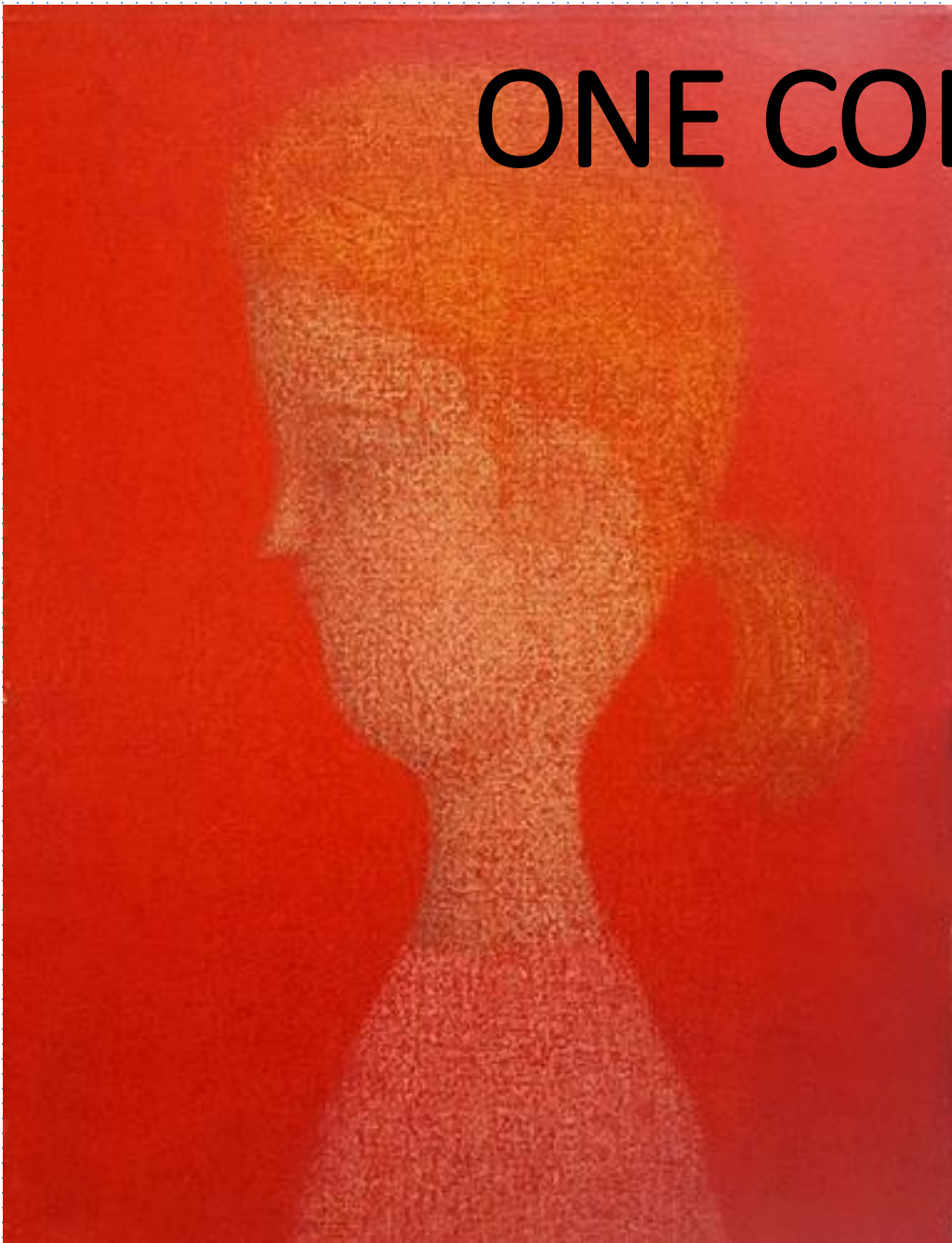


Crazy Daisy Y4-A1-1



SHADES OF
YELLOW

ONE COLOUR PAINTING RED



ONE COLOUR PAINTING BLUE



ONE COLOUR PAINTING YELLOW



NEUTRAL COLOURS BLACK AND WHITE

WHITE

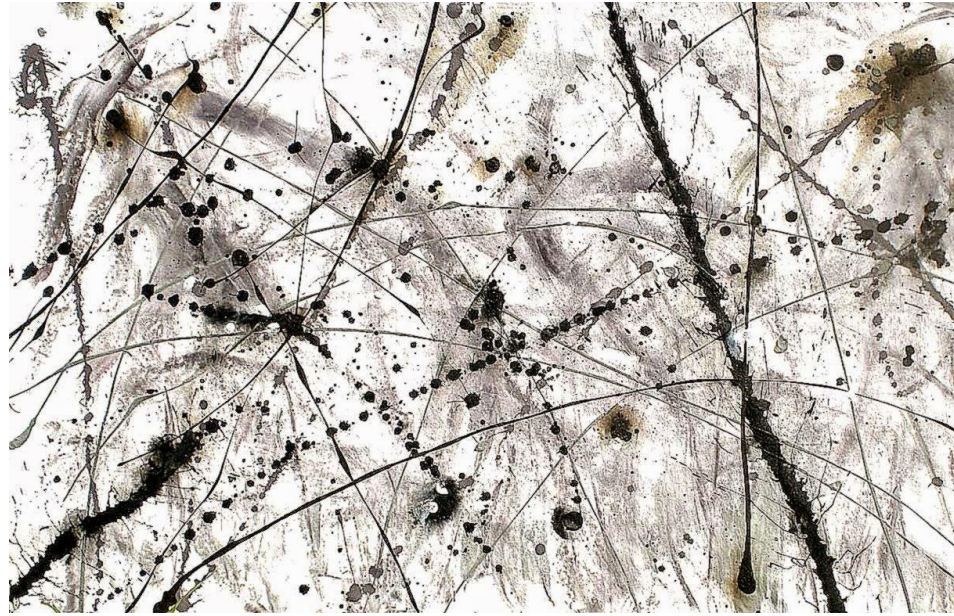
LIGHT GREY



BLACK

DARK GREY

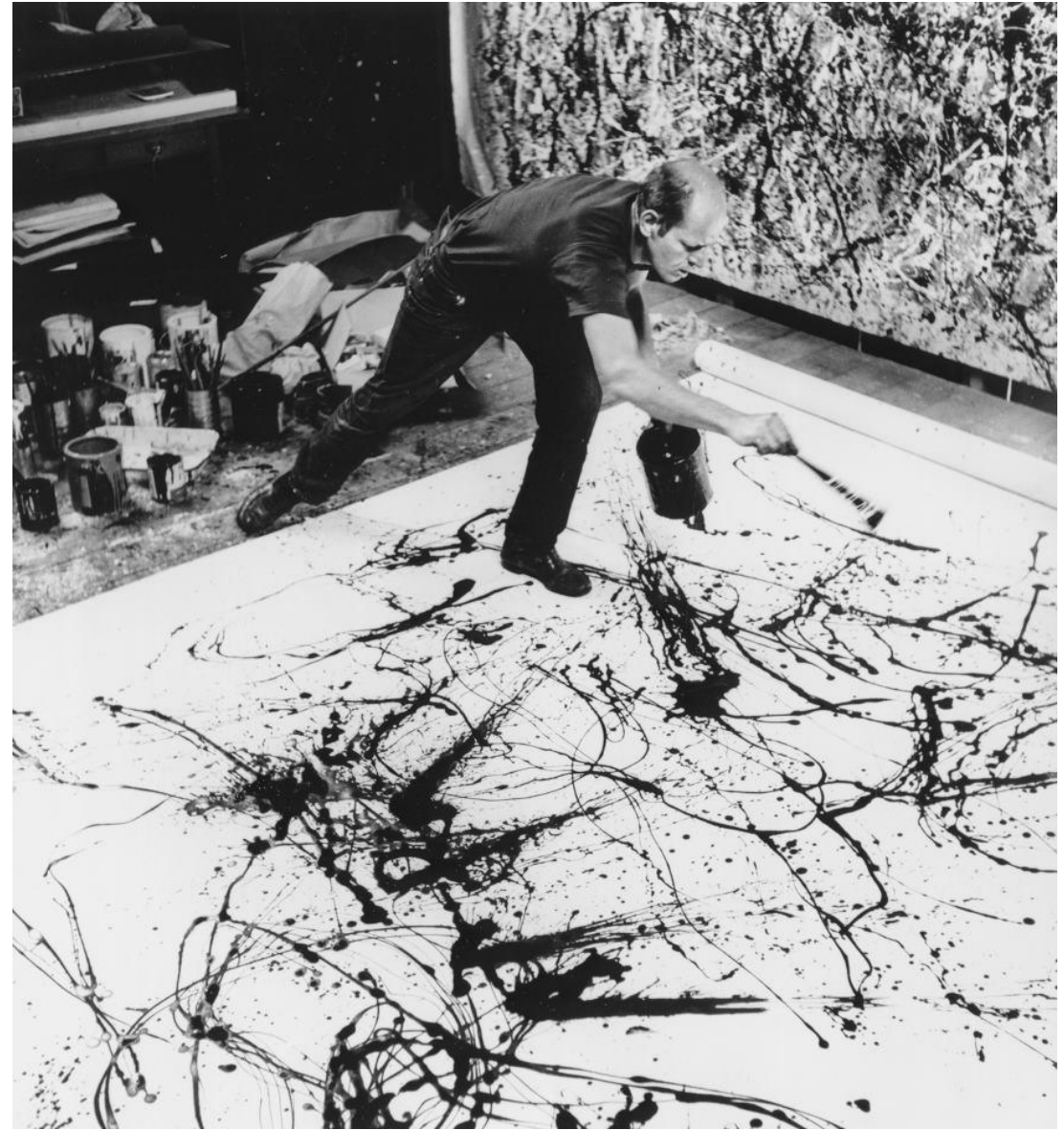
BLACK AND WHITE PICTURES



JACKSON POLLOCK

HE IS AN AMERICAN PAINTER.

HE USES THE DRIP PAINTING TECHNIQUE



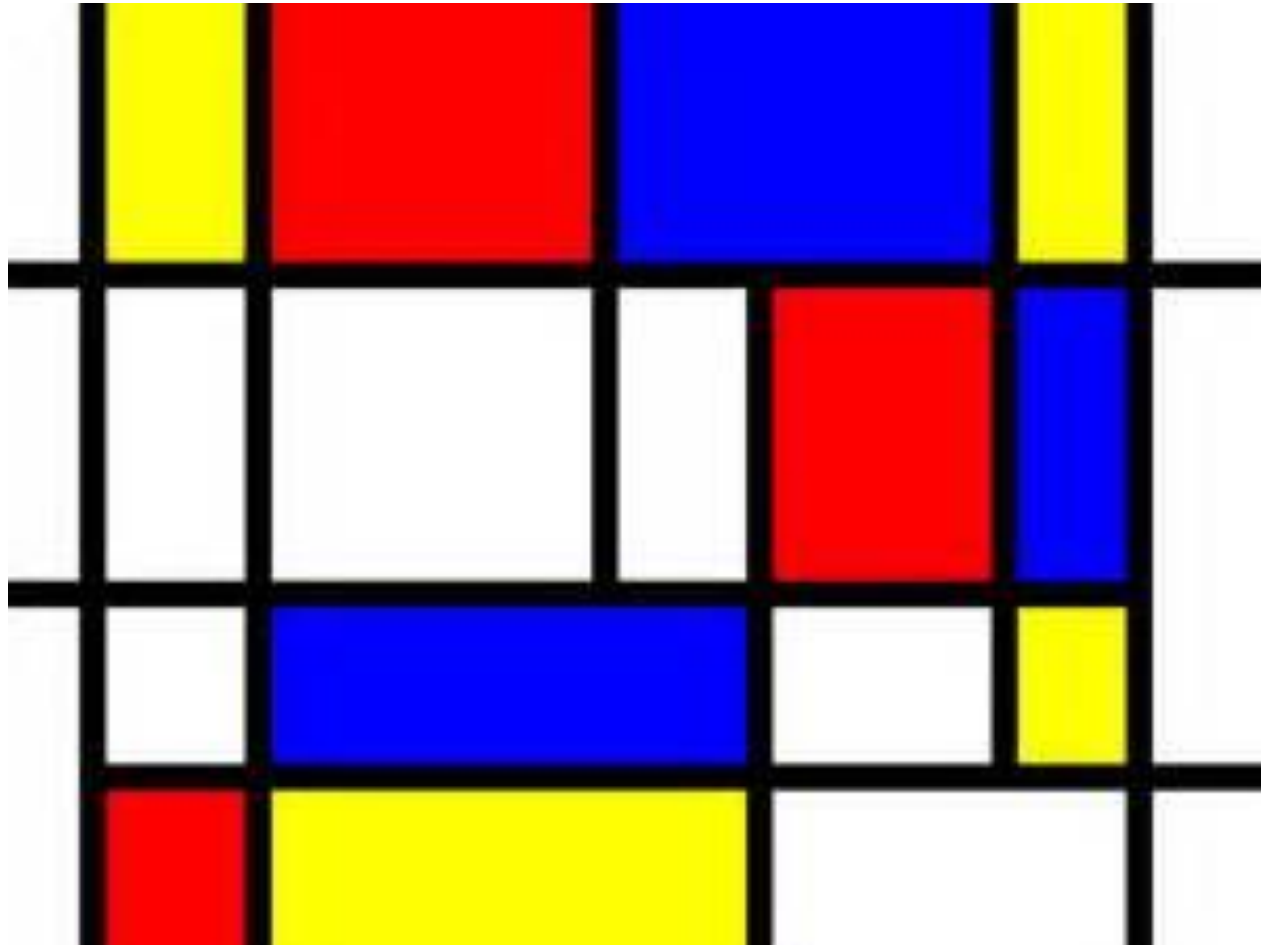
DRIP PAINTING TECHNIQUE: POLLOCK



MONDRIAN

HE IS A DUTCH PAINTER

PRIMARY COLOURS, BLACK AND
WHITE



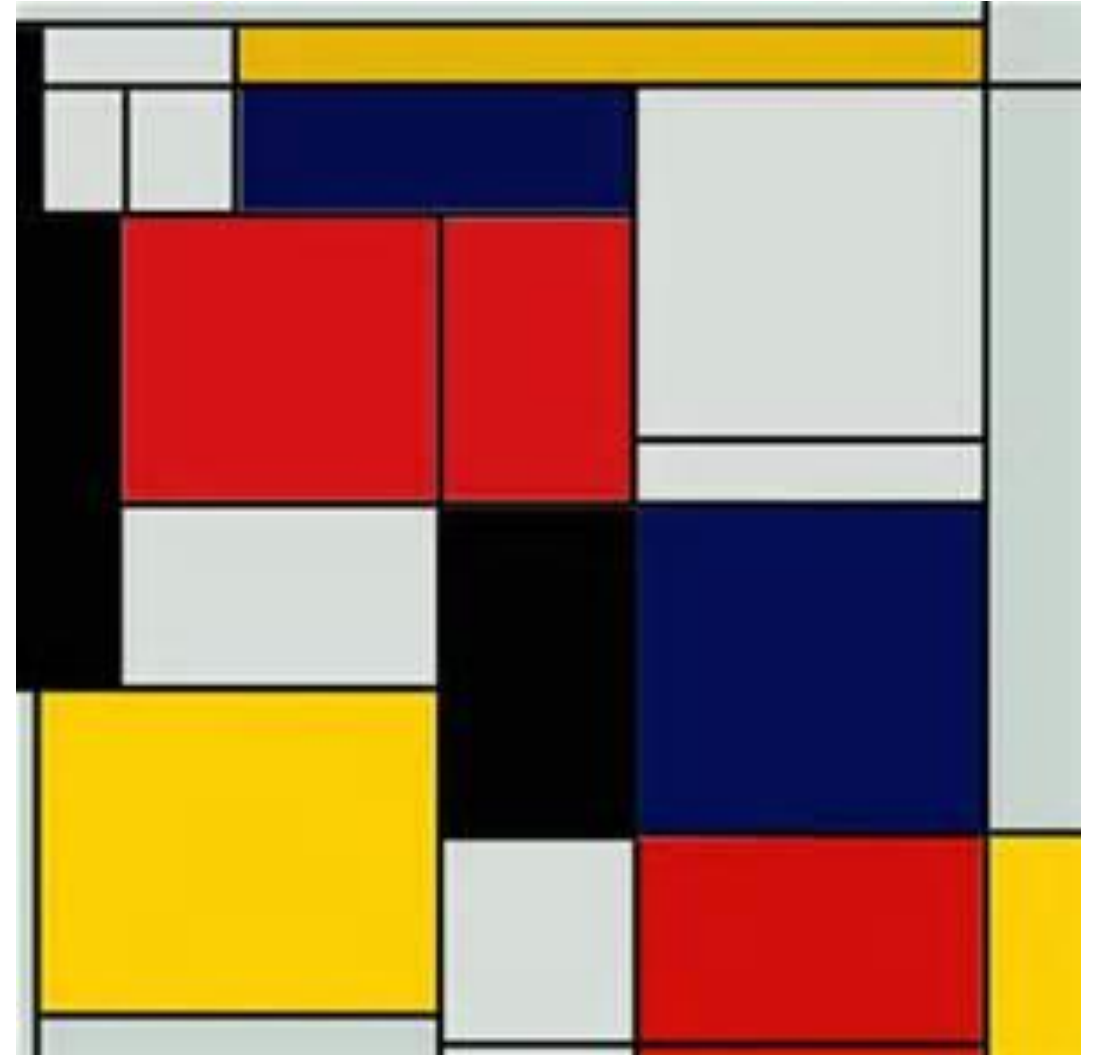
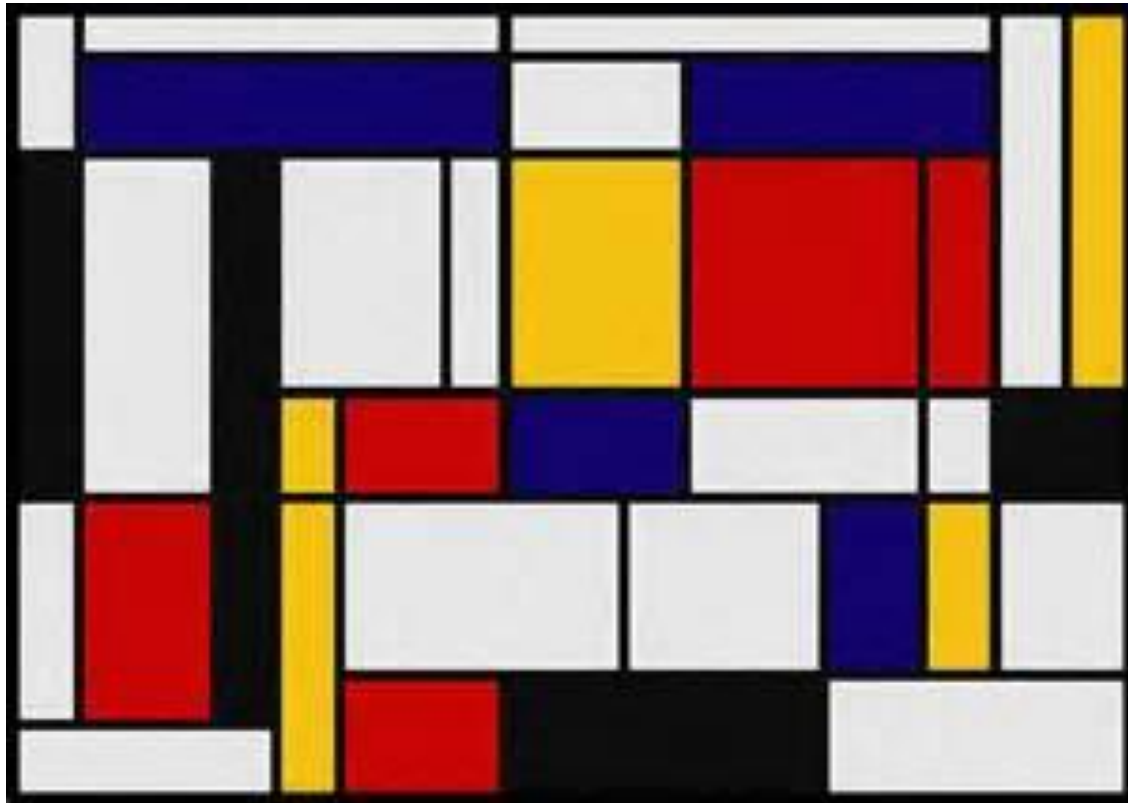
Horizontal line



Vertical line

MONDRIAN

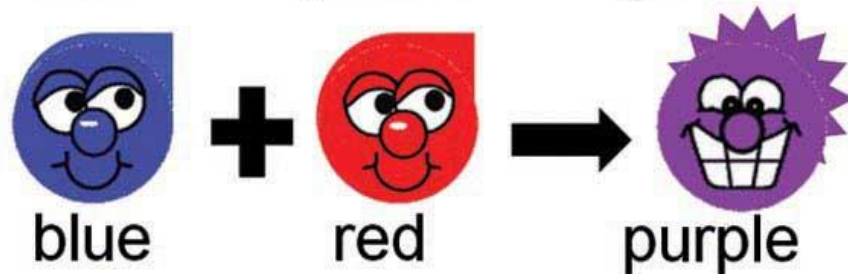
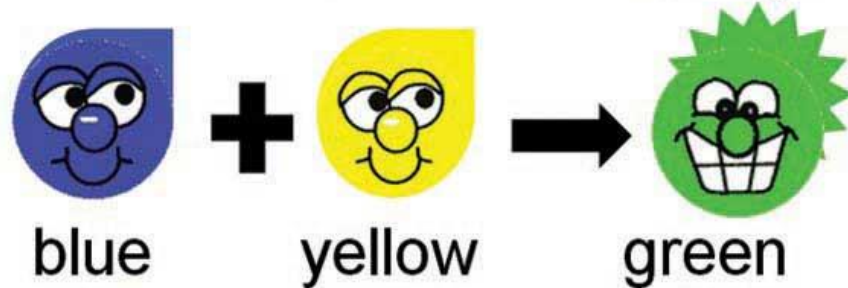
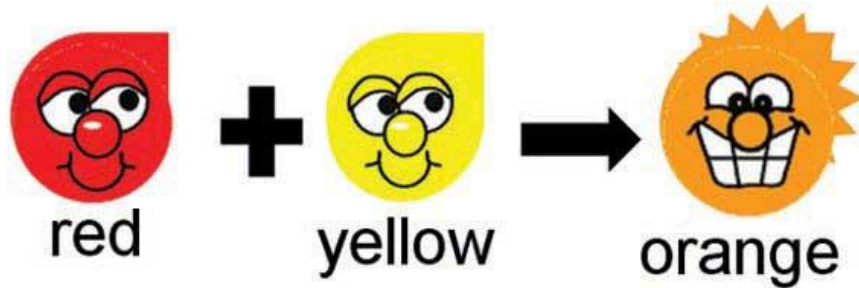
GEOMETRICAL SHAPES:
SQUARES AND RECTANGLES





**MONDRIAN
STYLE**

SECONDARY COLOURS



WATCH A VIDEO

<https://www.youtube.com/watch?v=yu44JRTixSQ>

HOW TO MIX COLOURS TO
MAKE A RAINBOW

<https://www.youtube.com/watch?v=wHMtvko29KQ>

MATISSE

THE SNAIL



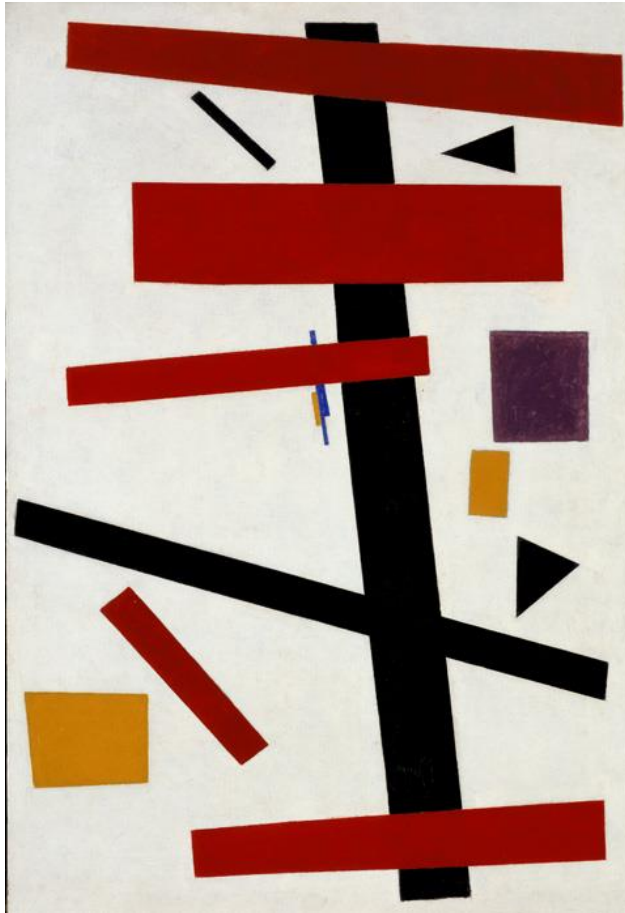
GEOMETRICAL SHAPES

PRIMARY AND SECONDARY COLOURS



ABSTRACT COMPOSITIONS

MALEVIC



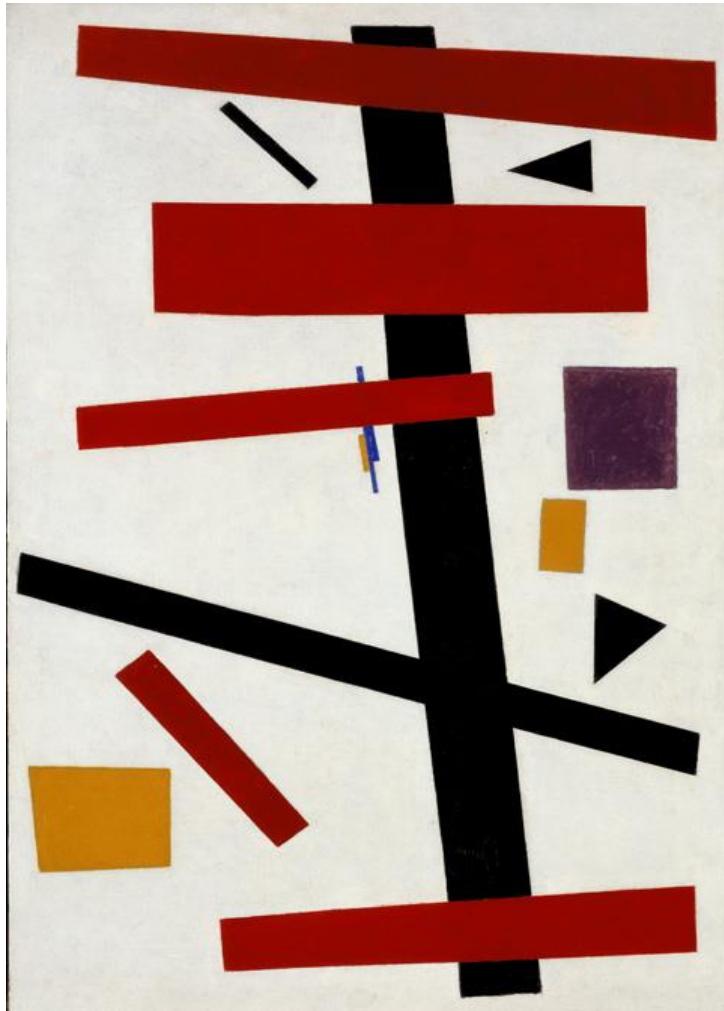
KANDINSKY



COMPARE: WHAT IS SIMILAR ? WHAT IS DIFFERENT ?

MALEVIC

HE IS A RUSSIAN PAINTER



HE USES PRIMARY AND SECONDARY COLOURS,
BLACK AND WHITE

SHAPES:

TRIANGLES



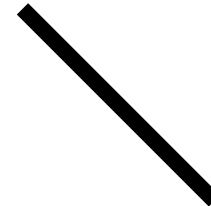
RECTANGLES



SQUARES



STRAIGHT LINES



KANDINSKY

HE IS A RUSSIAN PAINTER

HE USES PRIMARY AND SECONDARY COLOURS, BLACK AND WHITE



SHAPES:

TRIANGLES



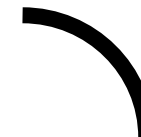
CIRCLES



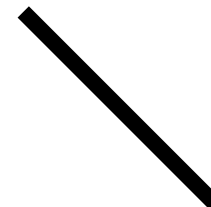
RECTANGLES



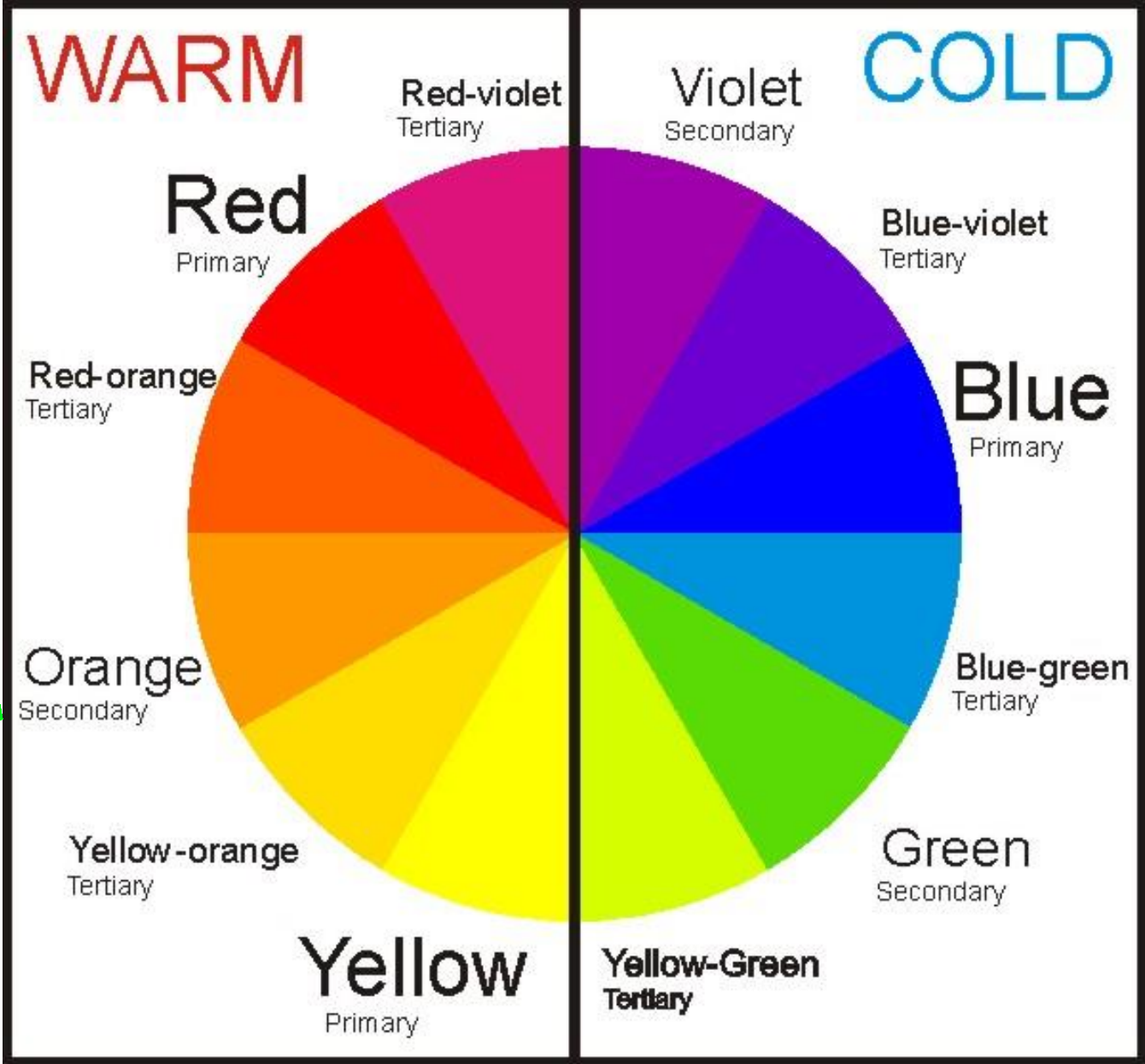
SQUARES



CURVED LINES



STRAIGHT LINES



COLD COLOURS

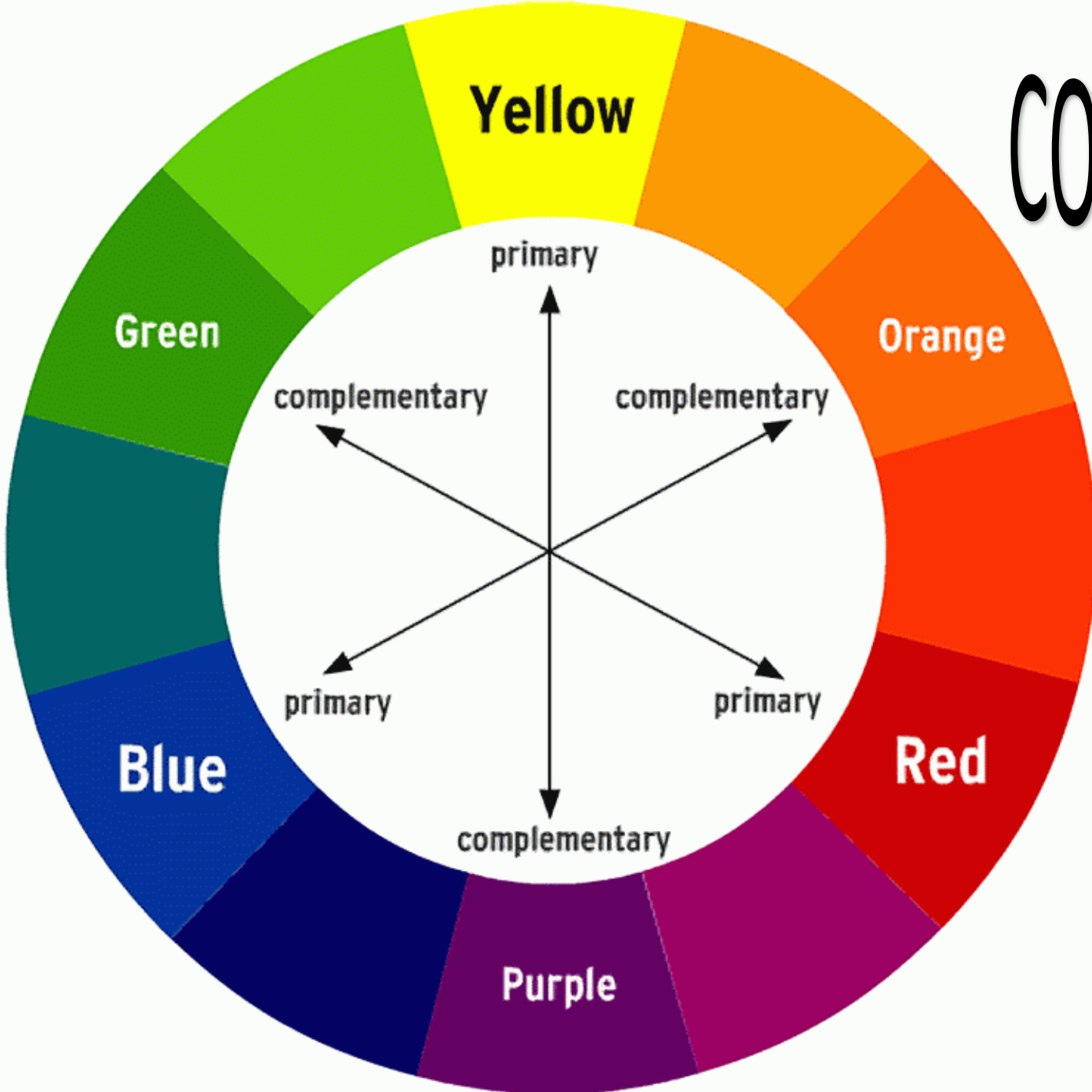
LEINOID AFRENOV

WARM COLOURS



COMPLEMENTARY COLOURS

They are opposite from one another on the colour wheel



COMPLEMENTARY COLOURS:

ORANGE AND BLUE

VAN GOGH

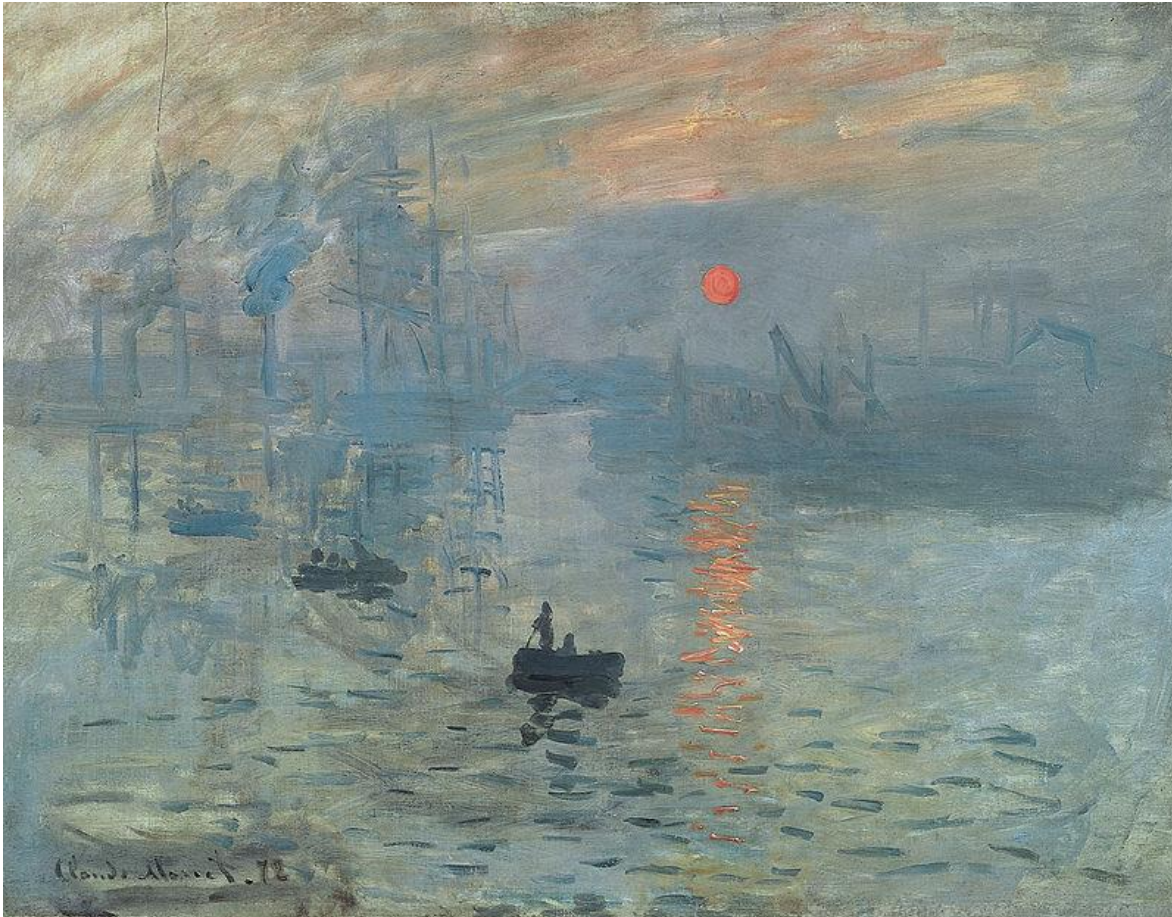


Starry night

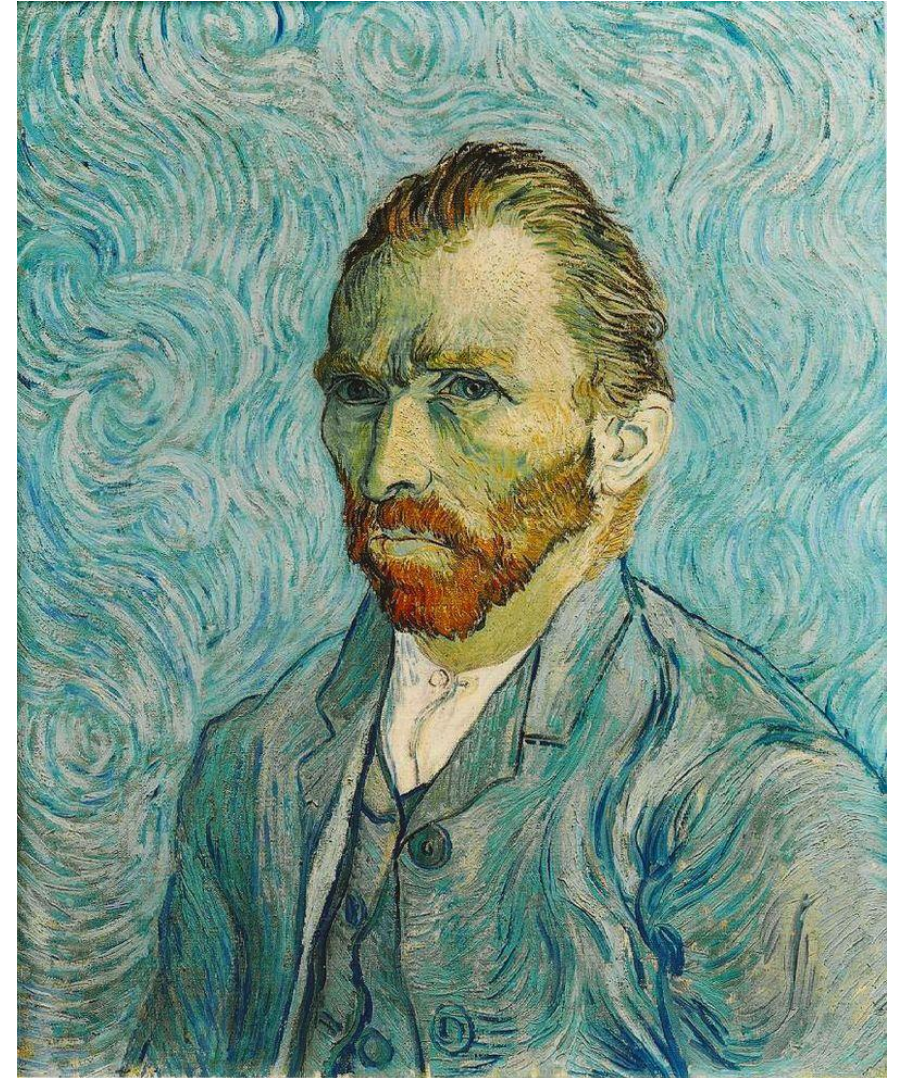
VAN GOGH IS A DUTCH PAINTER

COMPLEMENTARY COLOURS: ORANGE AND BLUE

MONET - IMPRESSION, SUNRISE a tiny orange sun and some orange light reflected on the clouds and water in the centre of a blue landscape



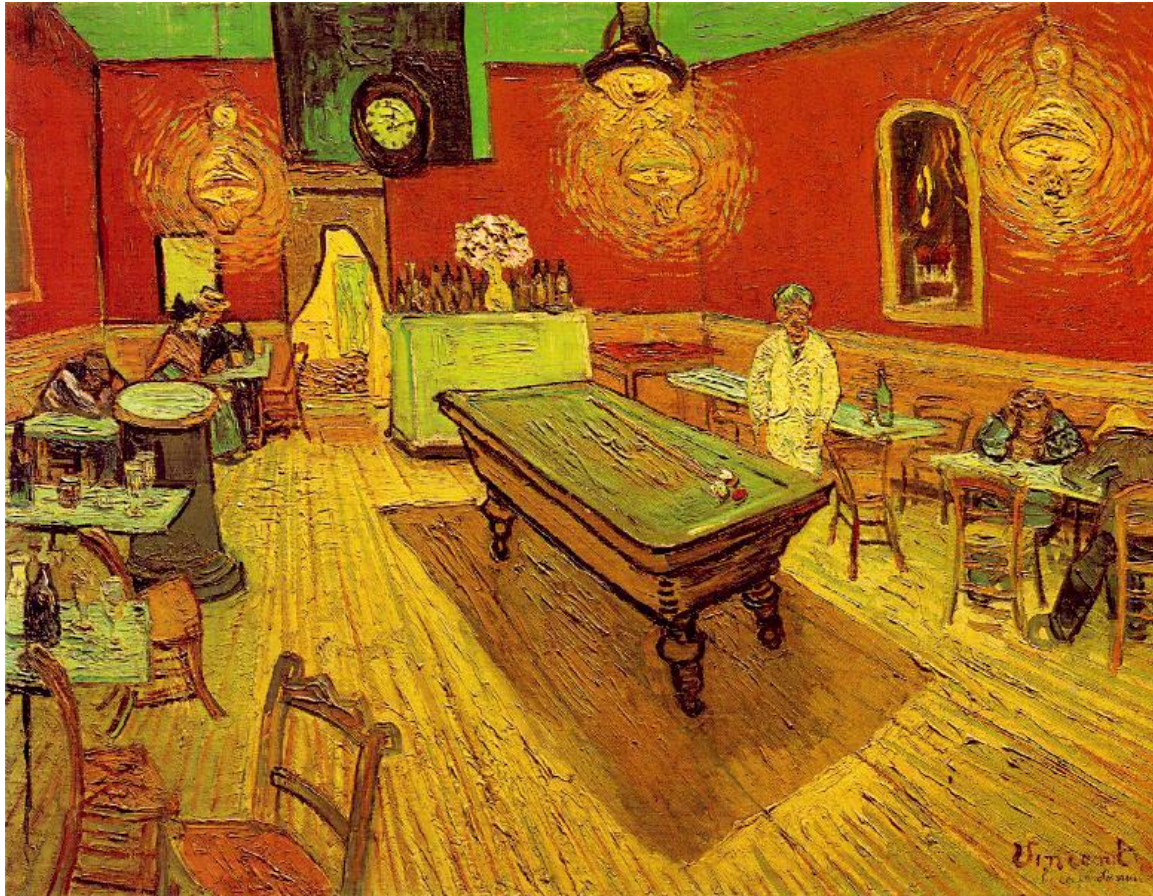
VAN GOGH - SELF PORTRAIT
Note the contrast between the orange of his hair and the blue background.



COMPLEMENTARY COLOURS: RED AND GREEN

VAN GOGH - 'THE NIGHT CAFE'

Vincent van Gogh (1888) used red and green to express what he called "the terrible human passions".



THE END